



InfoWorks 10.5 RS Free Edition Release Notes

## 1. Introduction

This document contains information on installing the InfoWorks RS Free Edition and associated software, and information relating to migration of databases from previous versions of the software.

## 2. Operating System Requirements

InfoWorks 10.5 RS Free Edition is only supported on, and can only be installed on the following Microsoft ® operating systems:

- Windows 2000 - requires Service Pack 4 or greater
- Windows XP - 32 and 64 bit editions – requires Service Pack 1 or greater
- Windows Server 2003 - 32 and 64 bit editions
- Windows Vista - 32 and 64 bit editions
- Windows Server 2008 - 32 and 64 bit editions
- Windows 7 - 32 and 64 bit editions

InfoWorks RS Free Edition is not supported on the Intel Itanium architecture.

It may be necessary to update the Microsoft Jet database engine before installing InfoWorks – see section 4 below.

When interfacing to 3rd party GIS products, and when using Oracle master databases, you need to ensure that the software is supported by its vendor on the platform you are using.

## 3. The InfoWorks Installer

The installers that we provide are Microsoft installer 'MSI' files. The names of the files include a number that is used to distinguish the exact software build on the CD.

The installer for version 10.5 of the InfoWorks RS Free Edition is named IW\_OL\_18026.msi. It installs InfoWorks along with the MapObject LT GIS component from ESRI.

If you are not installing the InfoWorks RS Free Edition, the version of the installer that you receive will depend on which GIS component you arranged to be provided with InfoWorks.

In addition to the main InfoWorks installer, which installs the InfoWorks software, necessary third party components and documentation, you may also find some or all of the following useful:

- The installer for the example data – this is named IWRS\_T\_18026.msi
- 'What's new in InfoWorks RS 10.5'
- Detailed instructions for using InfoWorks on Oracle
- The scripts necessary to create InfoWorks databases on Oracle, and to update Oracle databases from InfoWorks 10.0

They are included on the CD along with the installer, and may also be downloaded if you need them.

## 4. Installing InfoWorks

You need to have administrative privileges in order to install InfoWorks.

InfoWorks 10.5 can be installed on a PC in parallel with one or more previous versions of InfoWorks, although you cannot have two copies of InfoWorks 10.5 on the same PC .

When you run the installer you will be prompted to accept the licence agreement, and to choose the location in which the software is installed.

Before installing the software please read the following notes.

### **Microsoft Jet 4.0 Database Engine**

InfoWorks requires the Microsoft Jet 4.0 database engine to be up to date. You need to have installed Jet 4.0 Database Engine service pack 8, or to have installed an operating system service pack containing this or a later version.

If the installer determines you do not have a sufficiently recent version of the database engine, a message will be displayed indicating that you have an old version of Jet installed and you will be prevented from installing InfoWorks. You will then need to download and install Service Pack 8 for it from the Microsoft web site.

If you get this message when installing InfoWorks or would like more information about this requirement please refer to Appendix A.

### **Windows DFS (Distributed File System) Replication**

InfoWorks Jet master databases should not be stored in directories replicated via Windows DFS Replication.

### **Use of ArcGIS with ESRI supplied single use hardware keys**

Users of ArcGIS who have ESRI supplied single use hardware keys who want to use InfoWorks when ArcGIS is installed but the ESRI supplied hardware key is unplugged should consult appendix C for instructions. Please note that this section only applies to users with single user hardware keys used on the client PC, not to users of network floating licences.

### **Software check for current support contracts**

Users are only be able to run versions of the software if they have a valid support contract at the time of the software's release. This does not affect the ability to run older versions of the software.

## **5. Installer for Example Data**

You need only install this if you wish to use the example data.

The installer requires administrative privileges and offers you the opportunity to choose where to install the files.

If you uninstall the example data you will, of course, lose any work that you have done in the example database.

This installer can be run at any time, it does not need to be installed before you start using InfoWorks 10.5 RS Free Edition. When you install it, the example database will automatically be set as the current master database.

The default location for this data is C:\InfoWorks105. You can, of course, override this location. In particular you need to do so if you do not have read and write access to your 'C' drive.

## **6. After Installation**

If you have or have previously had InfoWorks 10.0 installed on the same PC you have installed InfoWorks 10.5 on and have not run the InfoWorks 10.5 beta release, the first time you run InfoWorks 10.5 you will be asked if you want to migrate your settings from InfoWorks 10.0. The settings that would be migrated are Local Root location, Master Database, Units, GeoPlan and GeoPlan Labels. These are stored on a 'by user, by PC' basis, therefore answering the questions affects only the current user on the current PC. The options are Now, Later or Never. When you select 'Now' the settings will be immediately migrated. If you select Later, you will be asked the same

question again next time you start InfoWorks or the InfoWorks administration program. If you select Never this dialog will not reappear again.

Any master databases you wish to use with InfoWorks 10.5 will need updating. For more information on updating databases see Appendix B.

Please be aware that you should not under normal circumstances make a copy of an InfoWorks database and then continue to work with the original and the copy. This restriction applies whether or not you are using both copies in the same or different versions of the software. If you need to do this for some reason, please contact the MWH Soft technical services team who will explain the special precautions you need to take.

## 7. Server Databases

In addition to the Jet database engine, InfoWorks RS Free Edition also supports Oracle (versions 9i, 10g and 11g).

Instructions on installing and updating databases for these databases can be found in a separate document, which can be found on the CD or downloaded from the MWH Soft web-site as appropriate.

# Appendix A - Updating Databases

## Overview

As extra functionality is added to InfoWorks requiring extra data, the InfoWorks databases require updating to add extra tables and fields to hold the data used by the new functionality.

If you do not have reliable, verified backups of your master database(s) you should back them up before updating.

There are two types of update:

### Major updates.

Once a major update is done, the database cannot be used in the previous version of the software. Providing you are not using an Oracle master database, major updates may be done using the InfoWorks administrator program.

It is necessary to check in networks in the version from which they are being updated before performing the update. The process of checking in networks will need to be done by all users who have networks checked out, i.e. it is likely to need doing on multiple PCs if you have multiple users.

If you ARE using a server database, then a major update will require the combination of one or more scripts and running an option in the InfoWorks administrator program.

### Minor updates.

Providing you are not using an Oracle master database, minor updates can be done by any user opening the database. They can be done without checking networks in, the update will be done seamlessly for checked out networks as and when they are opened by the person who checked them out.

The master database CAN be opened in the previous version of InfoWorks as well as the new version. Caution should be exercised, however, when using different versions of InfoWorks with the same database. In particular, if a network is checked out in the older version, then the values for any new data items (e.g. new object types, new fields in old object types) will NOT be there. Therefore if a model uses new features, then is checked out in the old version, then checked in again, potentially data used by the new features in the software will not be preserved.

If you are using a server database, the minor update will require a script available from MWH Soft upon request, and the database will not be able to be opened in the previous version of InfoWorks.

The update between InfoWorks RS Free Edition versions 10.0 and 10.5 is a major update. In addition, users who did not upgrade to version 10.0.3 or later will need to run an extra script.

If you have any questions or concerns about updating databases you should contact the MWH Soft Technical Services. The Technical Services Department can be contacted using [support@wallingfordsoftware.com](mailto:support@wallingfordsoftware.com) or by calling your local MWH Soft representative

### Updating Oracle Databases

Please see the separate document covering InfoWorks with Oracle databases for details.

## Appendix B - Microsoft Jet 4.0 Database Engine Updates

InfoWorks requires you to have version 4.0.8015.0 of msjet40.dll or later.

You will normally have a suitable version if you have done one of the following:

- installed Microsoft Jet 4.0 Database Engine Service Pack 8
- if you are running Windows 2000 – installed Service Pack 4 Update Rollup 1 (( see <http://support.microsoft.com/kb/891861/> for details of what this is)
- if you are running Windows XP – installed Service Pack 2
- if you are running Windows 2003 Server – installed Service Pack 1
- if you are running Windows Vista
- If you are running Windows Server 2008

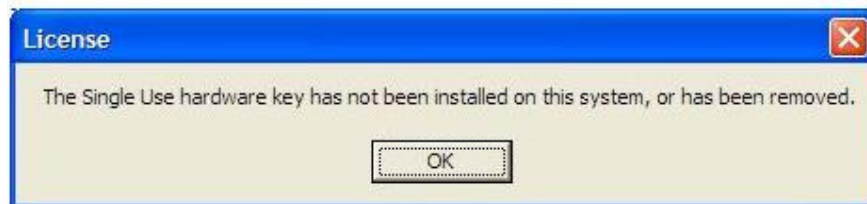
You can see this Microsoft web page for more information

<http://support.microsoft.com/kb/239114>

If you need to install the service pack, the version you need to download will depend on the operating system you are running and the language of your operating system.

## Appendix C - ArcGIS Single Use Hardware Keys

If you have a copy of ArcGIS secured with a single user hardware key installed on your PC, but do not have the key plugged in, you will see one of the following messages generated by the ArcGIS software:



If you want to run InfoWorks without ArcGIS installed you should select the 'Ignore installed ArcGIS Client Software' check-box on the GeoPlan tag of the Options dialog, accessed from the 'options' item on the 'tools' menu.

